



T8000 Thermal Printer

Powerful • Reliable • Proven

The T8000 is the premier high-end thermal printer.

With unmatched reliability and durability in demanding industrial applications, easy to use, and 100% verifiable output, the workhorse printer designed to keep printing in tough environments where other printers can't survive.

Product Benefits

- High performance ARM Cortex-A9
- 512MB RAM / 128MB Flash Memory
- 4", 6", and 8" model configurations
- Available in 203 DPI and 300 DPI
- Die-cast aluminum frame w/metal door
- Dual motor ribbon drive system
- Transfer and direct printing
- Standard Ethernet, USB, and serial interfaces
- Optional Wi-Fi 802.11a/b/g/n/ac
- Enterprise level Ethernet and Wi-Fi security
- 4-32 GB SD memory card capability
- Premium Asian and Andale font support



Easy-to-Use

- Intuitive printer setup, print quality, and self-help wizards
- Large full color display panel with easy to use navigation keys
- Easily accessible side media loading
- Seamless integration with the most extensive library of print emulations in the industry, including Postscript/PDF printing
- Quick Change Memory Card (option) stores printer configuration and network settings for easy installation of new printers



Industrial Performance

- High print speed CPU and expanded memory enables fast time to first print and high print speeds
- High volume printing up to 15,000 labels per day in demanding environments
- Rugged all metal cabinet design for 24/7 operation in the harshest environments for the most demanding global customers
- PrintNet Enterprise robust remote printer management software included
- Compatibility with SOTI Connect device management solution



Verifiable Output

- Eliminate compliance fines and chargebacks with integrated barcode verifier to produce 100% scannable 1D and 2D barcodes every time
- Fully integrated solution with the ability to retract, void, and reprint labels with bad barcodes auto-matically
- Automatic capture of grading reports that can be used for defending chargeback and regulatory audits
- Up to 4" scan width, compatible with 4" and 6" printer models

Rugged design with industry-leading system integration and remote management solutions, including the ability to print in sub-zero temperatures without a heated enclosure.

Connectivity Anywhere

- Experience unrestrained networking power anywhere in your enterprise
- Extensive communication options to connect into your environment
- Robust networking capabilities including the latest security protocols
- State of the art dual band 802.11a/b/g/n/ac Wi-Fi with support for the latest encryption and authentication security

Extensive Print Language

- Support for all major thermal printer languages enables seamless plug and play
- First to offer Postscript / PDF printing on a thermal printer
- Integrates with all major ERP systems such as SAP and Oracle

Harsh Environment

- Operates in the toughest production and warehouse environments
- Robust enclosure design protects against the normal knocks and bumps
- Resilient against environmental dirt and grime
- Tested to work at temperatures down to -5°C and up to +40°C

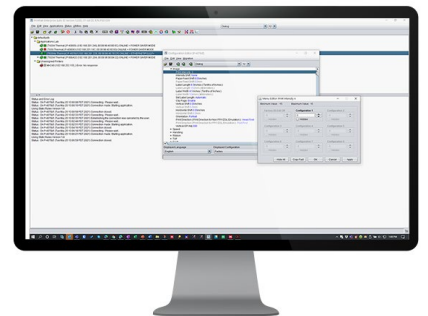
Remote Printer Management

- Full feature PrintNet Enterprise remote worldwide printer management tool
- Check status, get email and text alerts, push firmware updates, remote diagnostics
- Includes virtual control panel to configure the printer as if it was next to you
- Fully compatible with SOTI Connect IoT cloud / on-premise EMM platform

Exclusive Solutions



Barcode Verifier
(T8000 ODV-2D)



PrintNet Enterprise

Key Features

 A detailed diagram of the T8000 printer showing its internal components and external features. Callouts point to various parts:

- 3.4" Color Display Panel with Easy Navigation**: Points to the front control panel.
- Energy Star Certified**: Points to the bottom left corner of the printer.
- Full Metal Enclosure with Friction Side Hinges for Safety**: Points to the main body of the printer.
- Easy-to-Replace "Tool-Less" Snap-in Printhead**: Points to the internal printing mechanism.
- Large Side Window for Better Viewing of Supply Status**: Points to the transparent window on the right side.
- Standard Serial, USB and 10/100 BaseT Ethernet**: Points to the ports on the right side.
- Easy Side Loading of Media and Supports Up to 625m Ribbons**: Points to the media loading area on the right side.

T8000 | Data Sheet

Model	T8000 4"	T8000 6"	T8000 8"
Resolution	203dpi or 300dpi		
Printing method	Direct Thermal and Transfer Thermal		
Max. print speed	14ips @ 203dpi, 12ips @ 300dpi	12ips @ 203dpi, 10ips @ 300dpi	10ips @ 203dpi, 8ips @ 300dpi
Max. print width	4.1" (104mm)	6.6" (168mm)	8.5" (216mm)
Media type	Roll or Fan-Fold Labels, Tags, Paper, Film, Tickets		
Media handling	Standard: Continuous, Tear-Off Strip, Tear-Off / Options: Peel-Off, Cut, and Rewind		
Media width	Min 1" (25.4mm) / Max 4.5" (114.3mm)	Min 2" (50.8mm) / Max 6.8" (172.7mm)	Min 3" (76.2mm) / Max 8.75" (222.2mm)
Media thickness	0.0025" (0.00635mm) to 0.010" (0.254mm)		
Media length	Min.: Continuous, Tear-Off 0.25" (6.35mm) Min.: Peel-Off, Cutter 1.0" (25.4mm) Max.: 99" (2,515mm)		
Media core diameter	1.5" (38.1mm) - 3.0" (76.2mm)		
Media max. roll diameter	8.0" (209mm)		
Ribbon type	Wax, Wax/Resin, Resin		
Ribbon width	Min 1" (25.4mm) / Max 4.5" (114.3mm)	Min 2" (50.8mm) / Max 6.8" (172.7mm)	Min 3" (76.2mm) / Max 8.75" (222.2mm)
Ribbon length	2050.5 ft (625 m)		
Ribbon core diameter	1.0" (25.4mm)		
Interface I/O	Standard: Serial RS232, USB, and Ethernet 10/100Base T Optional: Wi-Fi802.11a/b/g/n/ac, GPIO, Parallel		
WiFi security encryption	WEP 40/128bit, WPA Personal (PSK), WPA2 Personal (PSK) Enterprise (AES CCMP)		
WiFi security authentication	EAP-TLS, EAP-TTLS, PEAPv0/MS-CHAPv2, PEAPv1, EAP-MDS, LEAP		
Remote management software	PrintNet Enterprise Suite SOTI Connect: IoT device management		
Memory	128 MB Flash / 512 MB DDR		
Line input	Auto Range 90 - 264 VAC (48 - 62 Hz)		
Fonts	Font Technologies: Intellifont, TrueType, Unicode Standard Fonts: OCR-A, OCR-B, Courier, Letter Gothic, CG Times, CG Triumvirate/Bold/Condensed Asian Fonts (Optional SD card): Simplified Chinese, Japanese, and Korean Andale Fonts (Optional SD card): Simplified Chinese, Traditional Chinese, Korean, Japanese PDF/ PostScript Level 3: 35 fonts		
Graphic formats	PCX, TIFF, BMP, PNG		
Barcode	1D barcode: BC-412, Code 11, Code 39, Code 35, Code 93, Codabar, Code128 Subsets A/B/C, Industrial 2 of 5, Interleave 2 of 5, German I-2/5, EAN-8, EAN-13, UCC/EAN-128, UPC-A, UPC-E, UPCSHP, UPS 11, MSI, Matrix 2 of 5, PLESSEY, POSTNET, 4-state PostBar, Australian 4-state, FIM, ITF14, TELEPEN, PLANET, USPS Intelligent Mail, LOGMARS 2D barcode: PDF-417, MicroPDF-417, Maxicode, DataMatrix, QR Codes, Aztec, GS1 Databar (RSS-14)		
Printer language	IGP: PGL/VGL/ZGL/TGL/IGL/STGL/DGL/IEGL/MGL/EGL Job Control: P.JL, and PTX-SETUP Optional: IPDS, TN5250, Postscript (Level 1.3) / PDF (Level 1.7) PXML printer status and real-time label information for integration into third party software		
ODV-2D Integrated Barcode Verifier	Fully integrated barcode verifier grades and reports all 1D and 2D barcodes on every label, any orthogonal orientation Grading based on ISO 15415, 15416 and 15426 standards Full backup and overstrike of labels with bad barcodes Job grading reports		
Operating environment	Operating Temperature: 23° to 104°F (-5° to 40°C) (limitations based on selected media) Operating Humidity: 20-85% Non-Condensing Storage Temperature: 23° to 140°F (-5° to 60° C) Storage Humidity: 5 to 85% Non-Condensing		
Regulatory compliances	Emissions: FCC, CE, CCC Safety: cTUVus, CE, EAC, SABS, RCM, CCC, KC, S-MARK, NOM Environmental: RoHS, WEEE, Energy Star 3.0		
Physical dimension (W x H x D)	11.7" (297.2mm) x 13" (330.2mm) x 20.5" (520.7mm)	13.4" (340.4mm) x 13" (330.2mm) x 20.5" (520.7mm)	15.4" (391.2mm) x 13" (330.2mm) x 20.5" (520.7mm)
Weight	37 lbs (16.7 kg)	40 lbs (18.1 kg)	43 lbs (19.5 kg)
Options & Accessories	Wi-Fi 802.11a/b/g/n/ac Parallel GPIO TN5250 PDF/PostScript	IPDS ODV-2D Integrated Barcode Verifier Batch Rewind 4"/6"/8" Peel & Present 4"/6"/8" Heavy Duty Cutter 4"/6"/8"	Premium Asian Font Cards Premium Andale Font Cards QCMC (SD Quick Change Memory Card)



Global Headquarters

9F, No. 95, Minquan Road, Xindian District
New Taipei City, Taiwan 231
Office: +886 2 2218 6789

EMEA

Georg-Wimmer-Ring 8b
85604 Zorneding, Germany
Office: +49 8106 37979 000

Americas

3040 Saturn Street, Suite 200
Brea, CA 92821 U.S.A.
Office: +1 657 258 0808